

Why is government taxation such a contentious issue?

Gross Pay

Total

Net Income

Today's learning objective:

*copy
es.*

By the end of class, I will be able to define Fiscal Policy and differentiate discretionary from non-discretionary Fiscal Policy.

exec & legis

Today's language objective:

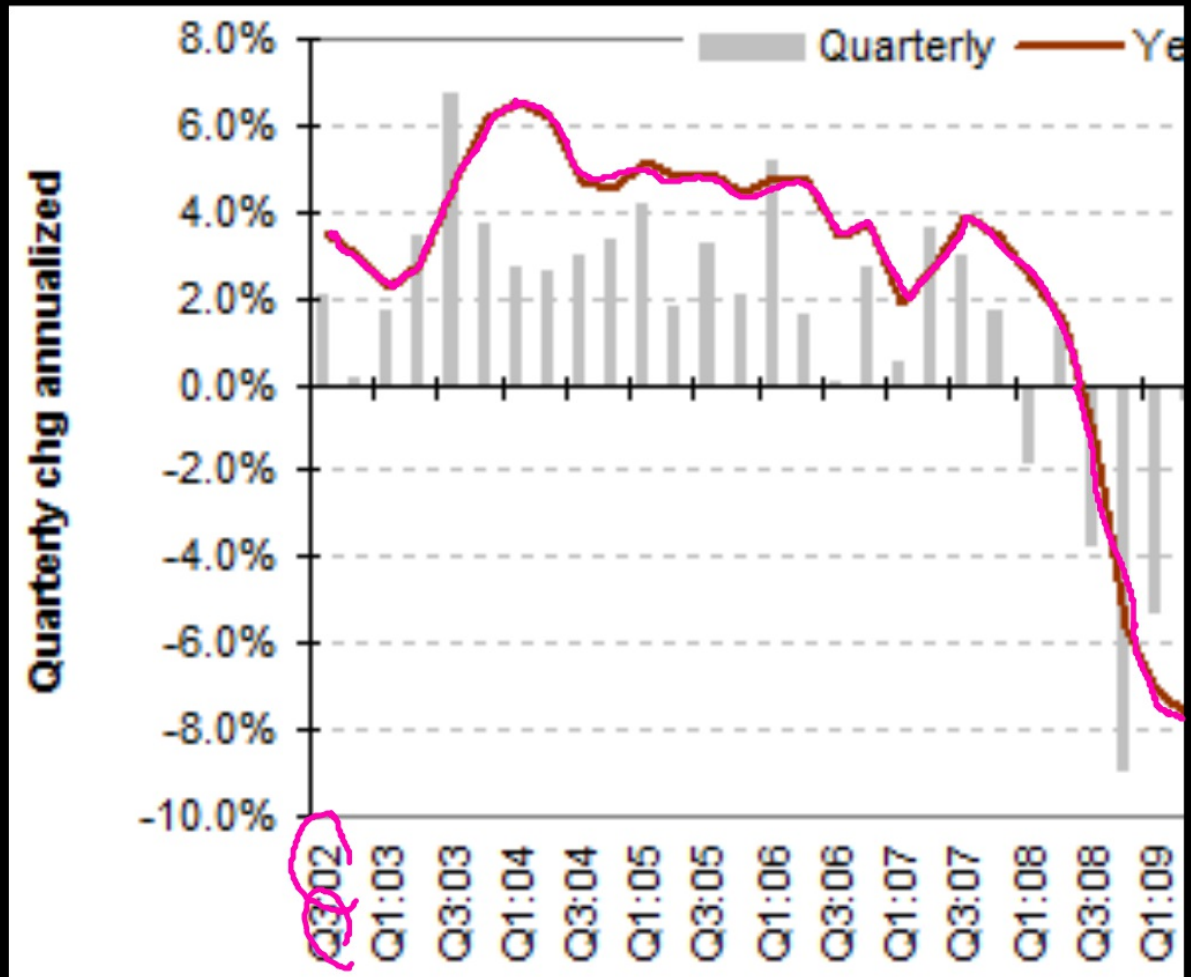
- Discretionary. *choice*
- Non-discretionary. *automatic stabilizers*
- Fiscal Policy
- Laffer Curve

NYE

We just sang Auld Lang Syne to celebrate a momentous 2008, and things are looking dicey.

$$GDP = C + I + G + X$$

GDP growth



Unemployment rate

Year	Jan	Feb	Mar	Apr	May	Jun	Jul	Aug	Sep	Oct	Nov	Dec
2006	4.7	4.8	4.7	4.7	4.6	4.6	4.7	4.7	4.5	4.4	4.5	4.4
2007	4.6	4.5	4.4	4.5	4.4	4.6	4.7	4.6	4.7	4.7	4.7	5.0
2008	5.0	4.9	5.1	5.0	5.4	5.6	5.8	6.1	6.1	6.5	6.8	7.3
2009	7.8	8.3	8.7	9.0	9.4	9.5	9.5	9.6	9.8	10.0	9.9	9.9

Newly-elected president Barack Obama is worried. Little does he know that he has YOU to rescue the economy.

As members of Congress, you can pass legislation to minimize the impact of this recession. What are you going to do?

Plans:

Decrease Imports

1

INVEST IN DOMESTIC
RESOURCES & NOT
IMPORTS

Make people from foreign countries
come to America through worldwide
companies

Types of Fiscal Policy:

1) Discretionary

- Infrastructure
- Tax cuts

2) Non-discretionary

- unemp. benefits (welfare)
- SNAP
supplemental
nutritional
assistance program

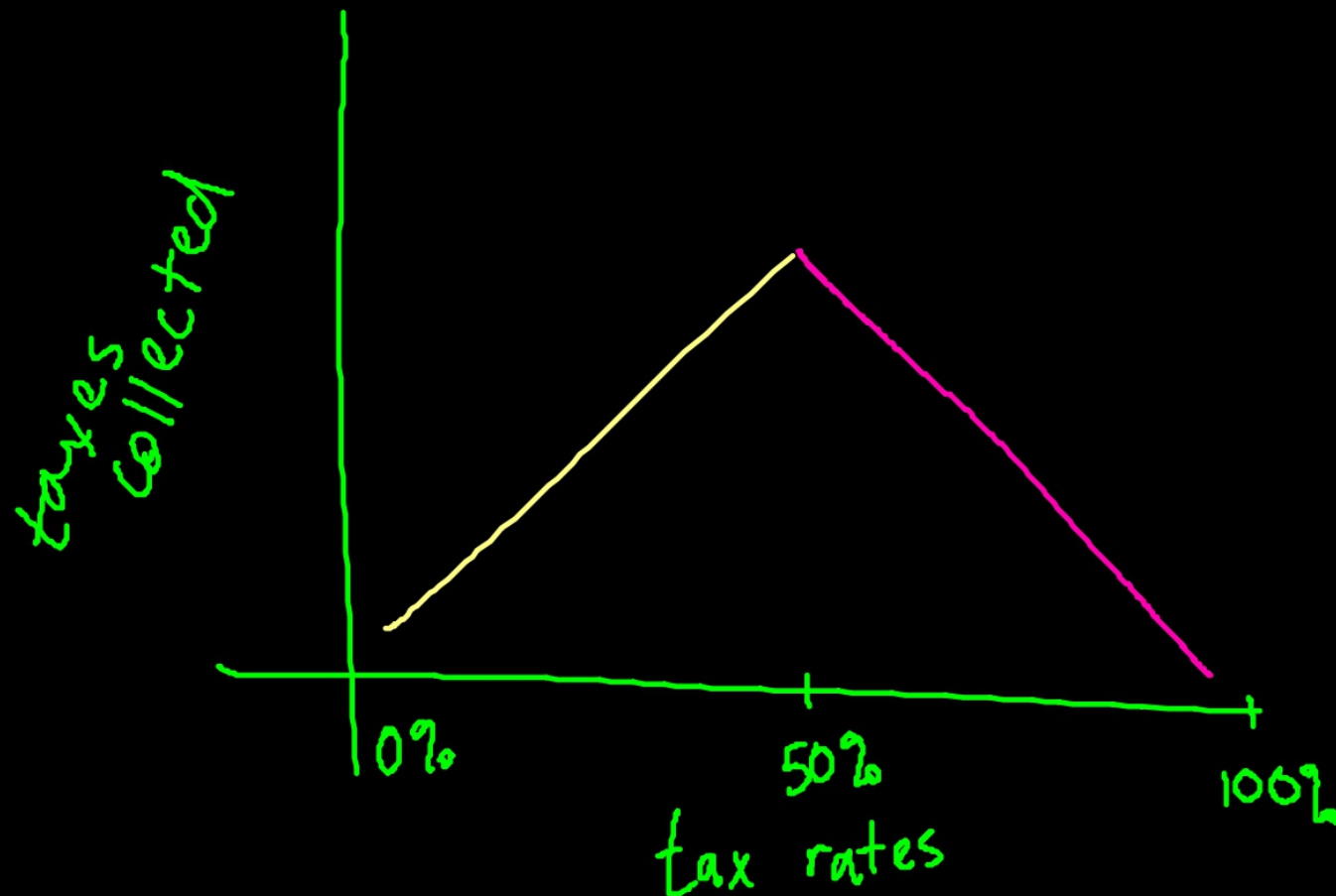
Drawbacks to discretionary fiscal policy:

- latency



Limits to discretionary fiscal policy:

Laffer Curve



Non-discretionary fiscal policy scenario :(

auto stabilizers

lost your job

GDP ↑ bc of unemp. benefits

Non-discretionary fiscal policy scenario :)

auto stabilizer

got that promotion

inf ↑

bumped into higher tax bracket

Questions from students: